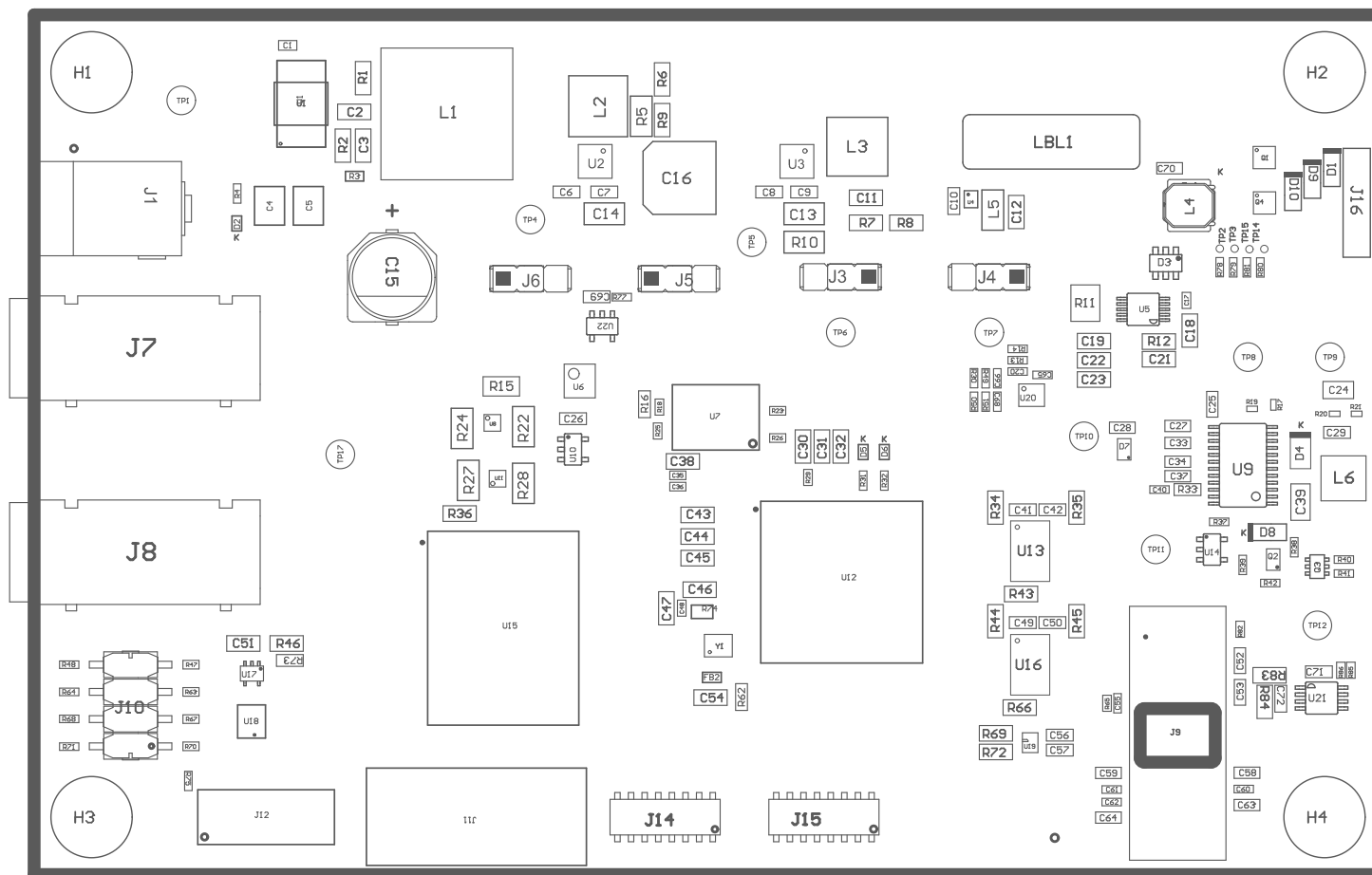


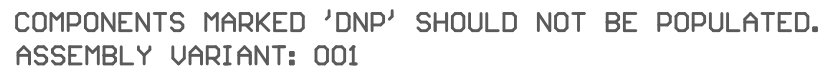
ZZ5 ■ Indication provided for the D* components at their cathode side.



Ref Des	Position
J3	1-2
J4	1-2
J5	1-2
J6	1-2
J10	1-2, 3-4, 5-6, 7-8

COMPONENTS MARKED 'DNP' SHOULD NOT BE POPULATED.
ASSEMBLY VARIANT: 001

PCB VIEWED FROM TOP SIDE	BOARD #:	DLP096	REV:	B	SUN REV:	Not in version control
	TID #:	N/A				
PLOT NAME = Top Assembly Drawing	GENERATED	:	5/1/2024	4:58:15 PM	TEXAS INSTRUMENTS	



PCB VIEWED FROM BOTTOM SIDE	BOARD #: DLP096	REV: B	SUN REV: Not in version control
	TID #: N/A		
PLOT NAME = Bottom Assembly Drawing	GENERATED : 5/1/2024 4:58:15 PM		TEXAS INSTRUMENTS